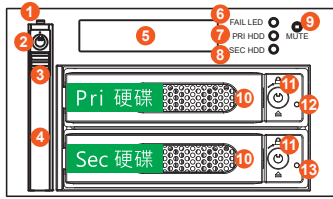


RAIDON

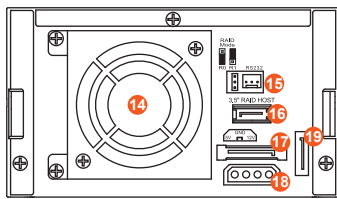
iR2624-S3 快速安裝導引

產品示意圖與配件表

前視圖



背視圖



- | | |
|---|--|
| <ol style="list-style-type: none"> 1. 2.5" 硬碟讀取燈 2. 2.5" 硬碟鑰匙孔 3. 2.5" 頂出按鈕 4. 2.5" 硬碟抽取盒把手 5. 液晶顯示面板 6. 故障顯示燈 7. 主硬碟狀態指示燈 8. 次硬碟狀態指示燈 9. 靜音按鈕 10. 3.5" 硬碟抽取盒把手 | <ol style="list-style-type: none"> 11. 3.5" 硬碟卡榫按鍵 12. 主硬碟讀取燈 13. 次硬碟讀取燈 14. 散熱風扇 15. RAID 模式設定 & RS232 埠 16. 3.5" 硬碟 SATA 連接埠 17. SATA 15Pin 電源輸入埠 18. 4Pin 電源輸入埠 19. 2.5" 硬碟 SATA 連接埠 |
|---|--|

打開包裝外盒後,包裝內容應包含下列組件:

iR2624-S3 產品本體X1(內含抽取盒x3)
SATA線 x1
快速安裝導引 x 1
螺絲及鑰匙

- 請先確認相關配件與產品本身是否有受損或是缺少配件,若有任何疑問,請與您的經銷商或業務人員聯絡。
- 請前往官網 (www.raidon.com.tw) 下載說明書、驅動程式以及其餘相關資源。

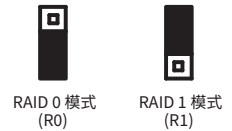


V1.0 (Nov. 2020)

1

設定RAID 層級

請透過機器後面的 jumper 來設定 RAID 層級。出廠預設值是 RAID 1。機器背面有三根 pin 腳用來設定 RAID 層級,若要設定 RAID 0 模式,請選用下面兩根;若要設定 RAID 1 模式,請選用上面兩根。



1. RAID 1 模式
 - 1). 將新的硬碟放入iR2623-S3中。強烈建議您使用兩顆相同的硬碟,以便取得對等的容量。如果兩顆硬碟的容量不同,iR2623-S3將會以小容量的硬碟為依據。
 - 2). RAID 1 模式下,兩顆硬碟是鏡射關係因此擁有相同的資料,因此有一顆硬碟損毀仍然可以正常運作。當放入新硬碟取代損毀硬碟後,系統會自動將資料重建到新的硬碟。
2. RAID 0 模式
 - 1). 將新的硬碟放入iR2624-S3中。強烈建議您使用兩顆相同的硬碟,以便取得對等的容量。如果兩顆硬碟的容量不同,iR2624-S3將會以小容量的硬碟為依據。
 - 2). RAID 0 模式下,兩顆硬碟的容量會被加總成一個大儲存容量,並且提供更佳的存取效能。

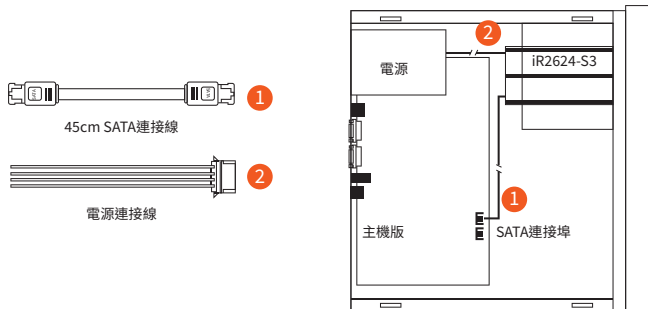
硬碟安裝

請參照以下步驟完成硬體安裝:

1. 3.5吋硬碟抽盒的部份,請使用零件包內附的鑰匙解鎖卡榫按鍵,再將按下卡榫按鍵,硬碟抽取盒把手便會彈開,即可取出抽取盒。
2. 安裝3.5吋硬碟,請使用6顆零件包內附的大顆螺絲加以固定;安裝2.5吋硬碟,請使用4顆零件包內附的小顆螺絲加以固定。
3. 2.5吋硬碟抽盒的部份,請使用零件包內附的鑰匙解鎖硬碟抽取盒鎖,將頂出按鈕向右推移,硬碟抽取盒把手便會彈開,即可取出抽取盒。
4. 將硬碟安裝到抽取盒上,將抽取盒放入主機內並關上把手。

2

5. 連接 SATA 連接線與電源線。(參照以下圖)



內接主機殼示意圖

NOTE RS232 連接埠和 RS232 連接線: 提供工控產業或 IPC 產業透過 RS232 進行硬體狀態偵測,如有需要可向銳鉸銷售/客服人員 supporting@raidon.com.tw 索取相關資料。

6. 硬體安裝完成。一旦開啟電腦,您的作業系統會自動辨識所裝置好的硬碟。如果您的硬碟是必須被格式化的,請依照電腦的作業系統進行硬碟格式化步驟。當完成硬碟格式化後,硬碟便可以進行資料讀寫。

產品使用注意事項

1. 電腦或伺服器具備SATA I、SATA II或SATA III介面。
2. 具備SATA I、SATA II或SATA III介面的硬碟。
3. 強烈建議使用iR2624-S3前先設定好RAID模式(預設值是RAID 1)。
4. 在新增或變更RAID模式後需重新啟動產品,以確保完成更新為新的RAID模式。
5. 本系統允許使用不同廠牌的硬碟。但如果要獲得更好的效能,我們強烈建議使用相同廠牌型號的硬碟。
6. 安裝硬碟前請先確認所使用的硬碟並無壞軌或是其他問題,以免導致系統損毀或資料遺失。
7. 硬碟格式化後,iR2624-S3的總使用儲存容量或許會與硬碟容量加總後的有所不同。
8. 強烈建議除了使用iR2624-S3的資料儲存功能外,請針對重要資料備份到另一個儲存裝置上或遠端備份,雙重備援您重要的資料。若您儲存在iR2624-S3的資料損毀或遺失,RAIDON將不負任何的責任。

3

LCD螢幕顯示與LED燈號說明

1. 開機與正常待機狀態。

iR2624 RAID-1 vxxxxx.x	Pri HDD : OK Sec HDD : OK
---------------------------	------------------------------

狀態	面板燈號		3.5" 硬碟讀取燈		2.5" 硬碟讀取燈	蜂鳴器
	故障顯示燈	主硬碟狀態指示燈	次硬碟狀態指示燈	主硬碟讀取燈	次硬碟讀取燈	
開機	--	橘燈恆亮	--	藍紫燈閃爍	藍燈恆亮	--
待機	--	橘燈恆亮	--	藍燈恆亮	藍燈恆亮	--
硬碟故障 (RAID 降級)	紅燈恆亮	--	--	紅燈恆亮	藍燈恆亮	鳴叫
資料存取	--	橘燈恆亮	--	藍紫燈閃爍	藍燈閃爍	--
資料重建 (Source)	--	橘燈恆亮	--	藍燈恆亮	藍燈恆亮	--
資料重建 (Target)	--	--	--	紅燈閃爍	藍燈恆亮	--
風扇故障	紅燈恆亮	橘燈恆亮	--	藍燈恆亮	藍燈恆亮	鳴叫
溫度過高	紅燈恆亮	橘燈恆亮	--	藍燈恆亮	藍燈恆亮	鳴叫

感謝您使用 銳鉸科技股份有限公司 的產品。

本手冊裡的資訊在出版前雖然已經被詳細確認,但實際產品規格將已出貨時為準;任何的產品規格或相關資訊更新,請您直接上 www.RAIDON.com.tw 網站查詢,或直接與您的業務聯絡窗口聯繫,本公司將不另行通知。

如果您對 銳鉸科技 的產品有任何疑問,或是想獲得最新產品訊息、使用手冊或軟體,請您聯絡 supporting@raidon.com.tw;我們將儘速回覆您。

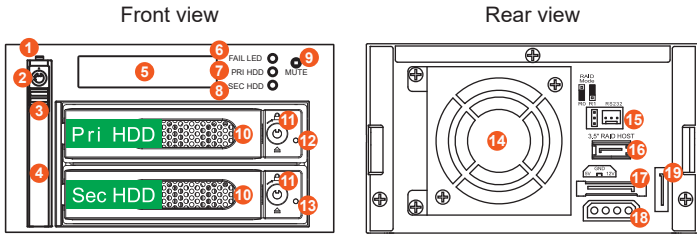
RAIDON 為 銳鉸科技股份有限公司 旗下品牌之一
本說明相關產品內容歸 銳鉸科技股份有限公司 版權所有

4

RAIDON

iR2624-S3 Quick Installation Guide

Package Contents and Product Views



- | | |
|----------------------------------|-----------------------------------|
| 1. 2.5" HDD status indicator LED | 11. 3.5" HDD tray key lock |
| 2. 2.5" HDD tray key lock | 12. Pri HDD tray access light |
| 3. HDD tray ejection | 13. Sec HDD tray access light |
| 4. 2.5" HDD tray handle | 14. Cooling fan |
| 5. LCD Display | 15. RAID mode switch & RS232 Port |
| 6. LED of failure Alarm | 16. 3.5" SATA Port |
| 7. Pri HDD status indicator | 17. 15 PIN SATA Port |
| 8. Sec HDD status indicator | 18. 4Pin Power socket |
| 9. Mute Button | 19. 2.5" SATA Port |
| 10. 3.5" Removable drive tray | |

Open the package and you should find the following:

iR2624-S3 X1(with removable drive tray enclosed x 3)
SATA Cable x 1
Quick Setup Guide x 1
Screws and keys

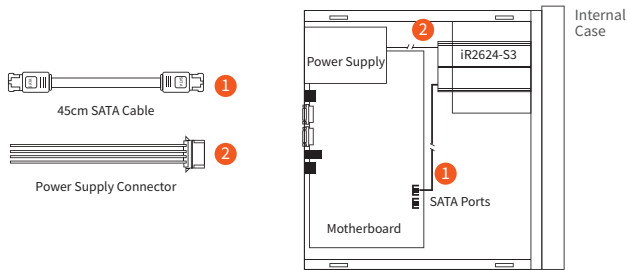
- Please check the product and accessories for any defect or missing parts. If you have any questions, please contact your product supplier.
- Please visit the official website (www.raidon.com.tw) to download user manuals, drivers and other related resources.



V1.0 (Nov. 2020)

1

- When the HDD/SSD installation has been completed, insert the hard drive tray into the system horizontally and secure the latch into place.
- Properly connect SATA cable and power cable from your system to the device.



NOTE RS232 Port: For industrial control system or IPC to monitor the hardware status. More information, please contact your sales window or supporting@raidon.com.tw

- Power on your system after hardware installation is completed, and your operating system will automatically detect the hard drives from booting. Then follow the steps from your operating system to partition and format the drives when necessary, device will be ready to use once the format is completed.

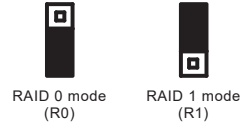
Hardware Requirements and Precautions

- Computers or servers with SATA I & SATA II & SATA III.
- Hard drive with SATA I & SATA II & SATA III.
- You are strongly advised to set the storage mode (the default is the Independent mode) before using the iR2624-S3.
- The product needs to be restarted after adding or changing the RAID mode, and the update is guaranteed to be the new RAID mode.
- The product allows the user to simultaneously utilize two hard drives manufactured by different companies. However, if the user expects better efficiency, we strongly recommend the users to use hard drives manufactured by the same manufacturer.
- Please make sure that the two hard drives are free from bad blocks or defects prior to installation in order to avoid system crashes or data loss.
- The actual storage capacity of iR2624-S3 recognized by the system may differ from the total capacity stated on the hard drives combined once the drives have been formatted.
- It is highly recommended for users to back up important data contained within the iR2624-S3 on a regular basis or whenever the user feels necessary to a remote or a separate storage device. Stardom will not be responsible for any lost of data caused during the use of the unit or the recovery of the data lost.

3

How to set the RAID Mode

The default is RAID 1 mode. Please set the RAID mode with the jumper at the rear side. For RAID 0 mode, please select the bottom two pins. For RAID 1, please select the top two pins.



- RAID 1 Mode**
 - Place two new hard drives into iR2624-S3 and strongly suggest you to use two identical hard drives to get the equal capacity. If the capacity is different, iR2624-S3 is downward to the small hard drive capacity.
 - Under RAID 1 mode, two hard drives has the identical information as one to mirror to the other one, therefore each of the hard drive failed is still able to function normally. When you replace the failed hard disk to the new one the system automatically rebuilding the data to the newly place hard disk.
- RAID 0 Mode**
 - Place two new hard drives into iR2624-S3 and strongly suggest you to use two identical hard drives to get the equal capacity. If the capacity is different, iR2624-S3 is downward to the small hard drive capacity.
 - Under RAID 0 mode, capacity is add up to a one big volume, also with the feature of faster read/write performance efficient.

Hardware Installation

Please follow the instructions below to complete the hardware installation.

- For the 3.5" HDD tray, please use the key included in the accessory kit to unlock the HDD tray key lock, and then press the HDD tray key lock. The removable drive tray will pop open and extract the removable drive tray.
- For 3.5" HDD/SSD, please secure it by use six the larger screws included in the accessory kit. For 2.5" HDD/SSD, please secure it by use four the smaller screws included in the accessory kit.
- For the 2.5" HDD tray, please use the key included in the accessory kit to unlock the 2.5" HDD tray key lock and push the HDD eject button to the right, the 2.5" HDD tray handle will pop up to remove the tray.

2

LCD Display and LED Indicators

- Bootling and Normal status.



Status	Panel light			3.5" HDD tray access light		2.5" HDD tray access light	Buzzer
	Fail LED	Pri HDD status indicator	Sec HDD status indicator	Pri HDD tray access light	Sec HDD tray access light		
Power On	---	Orange light always on	---	Blue and Purple light flashing	Blue light always on	---	---
Stabddy	---	Orange light always on	---	Blue light always on	Blue light always on	---	---
HDD Failure	Red light always on	---	---	Red light always on	Blue light always on	---	On
Access	---	Orange light always on	---	Blue and Purple light flashing	Blue light flashing	---	---
Rebuilding (Source)	---	Orange light always on	---	Blue light always on	Blue light always on	---	---
Rebuilding (Target)	---	---	---	Red light flashing	Blue light always on	---	---
Fan Failure	Red light always on	Orange light always on	---	Blue light always on	Blue light always on	---	On
Over Heat (>50°C)	Red light always on	Orange light always on	---	Blue light always on	Blue light always on	---	On

Thank you for choosing RAIDON's product.

The information provided in this manual was checked before publication, but the actual product specifications may have changed before shipping; Latest product specifications and updates can be found at www.RAIDON.com.tw or through your sales representative. No separate notifications will be provided by our company.

If you have any questions about RAIDON products or would like to receive the latest product information, instruction manuals, or firmware, please contact Supporting@raidon.com.tw for assistance.

RAIDON is one brand under RAIDON TECHNOLOGY, INC.

All product-related content in this manual are copyrighted by RAIDON TECHNOLOGY, INC.

4